

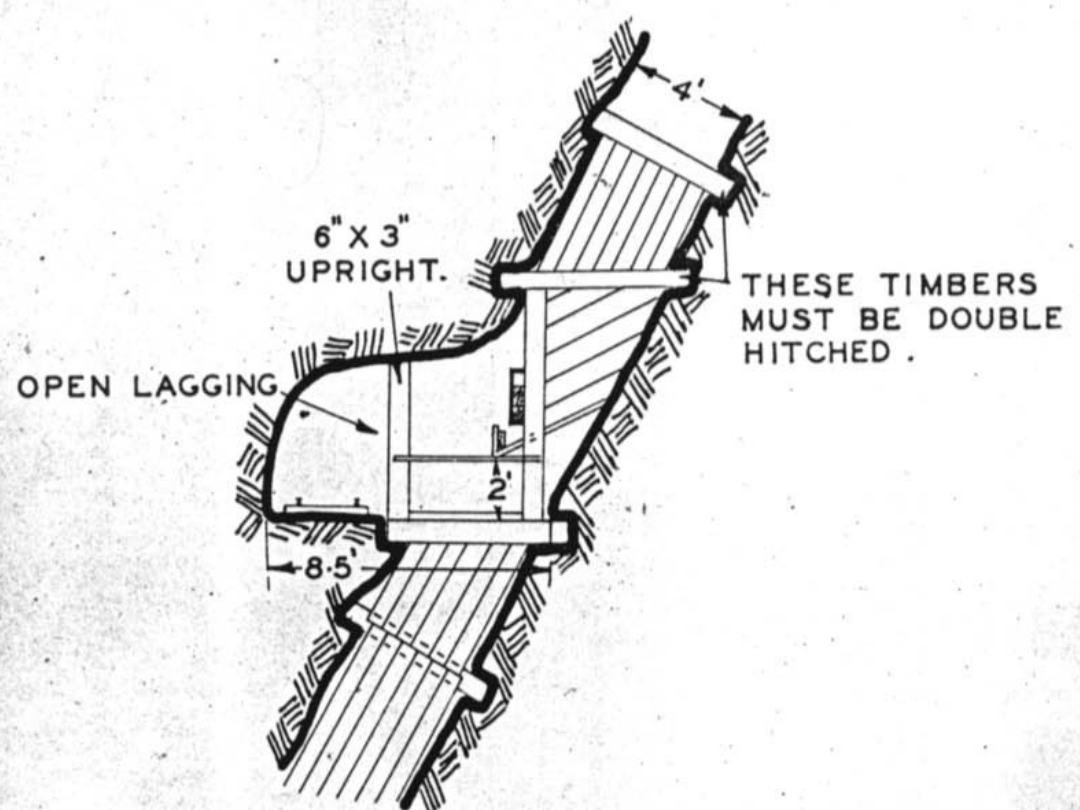
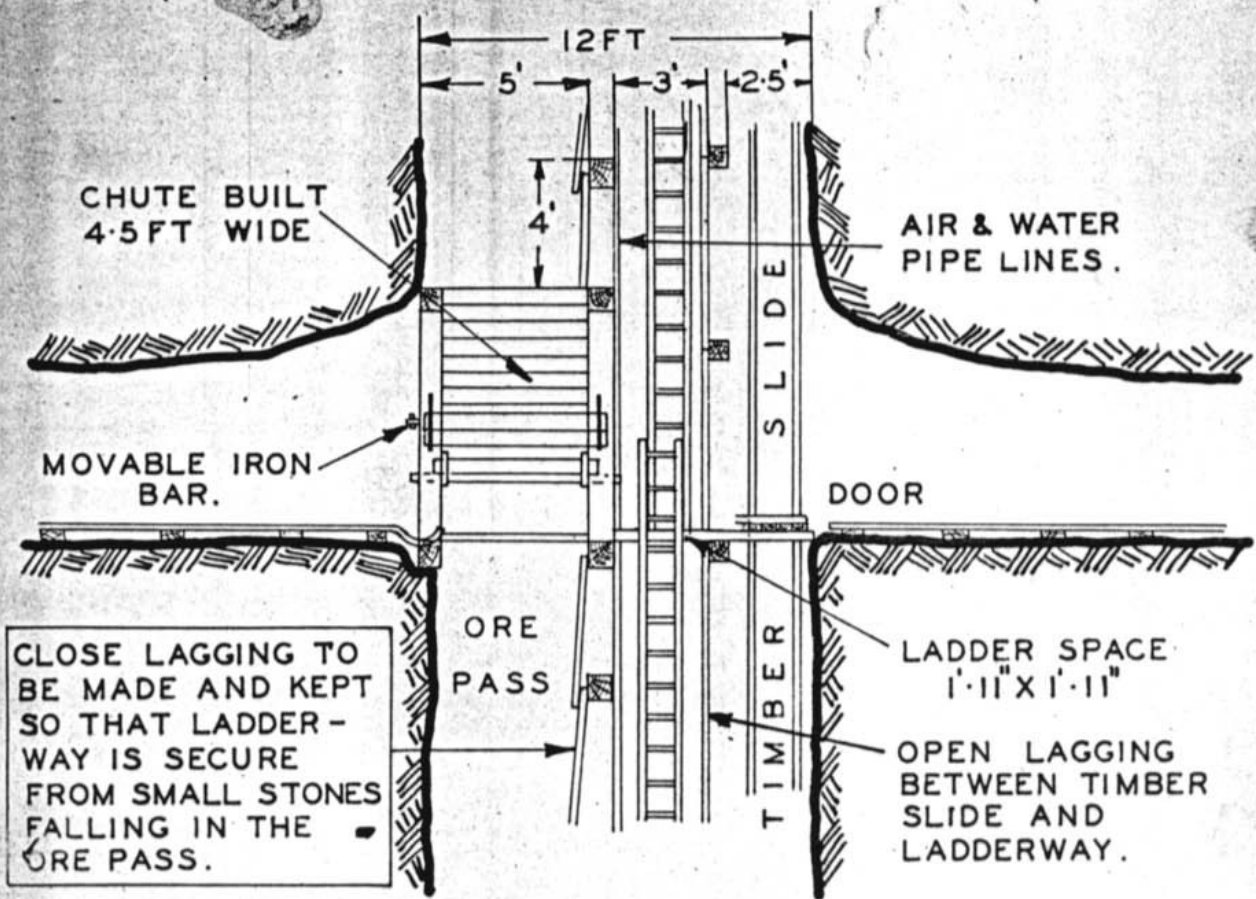
GRIP TO BE CARRIED IN DRIFTS AT TUNNEL LEVEL OR BELOW.

HALKYN DISTRICT UNITED  
MINES LTD  
MINE ENGINEERS DEPARTMENT.

MAIN LODE DRIFT.

SCALE	3/4 IN TO 1 FT.
DRWN	J. S. W. 1.12.37
TRCD	HA 2.12.37
APRD	J. S. W. 12.12.37

S113.



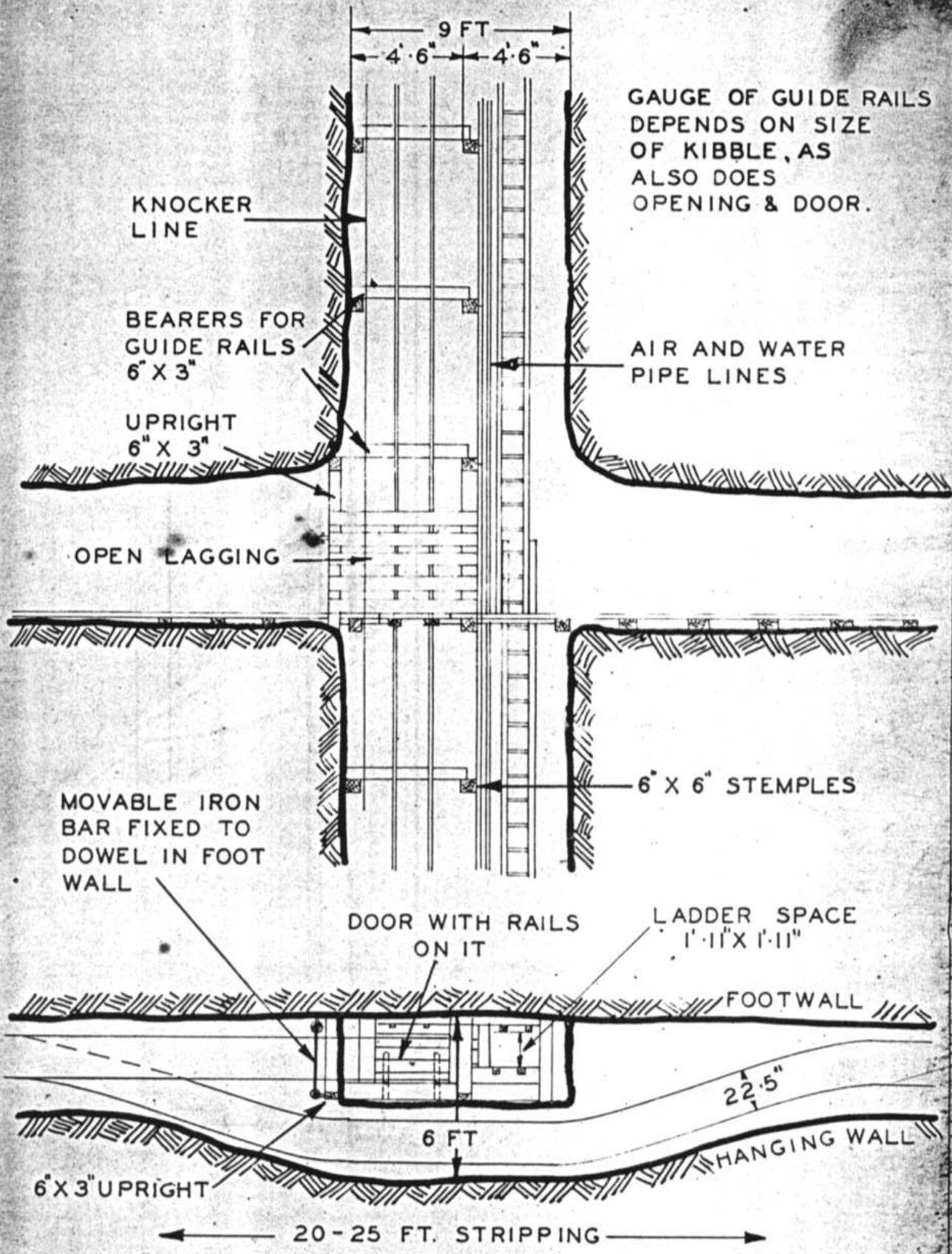
HALKYN DISTRICT UNITED  
MINES LTD.  
MINE ENGINEERS DEPARTMENT.

LAYOUT FOR WORKING  
RISE AND SUBLEVEL  
SIMULTANEOUSLY.

SCALE 5 FT TO 1 IN	
DRWN. A.S.W.	8/10/37
TRCD. H.A.	8/10/37
APRD. J.S.J.	8/10/37

S 105



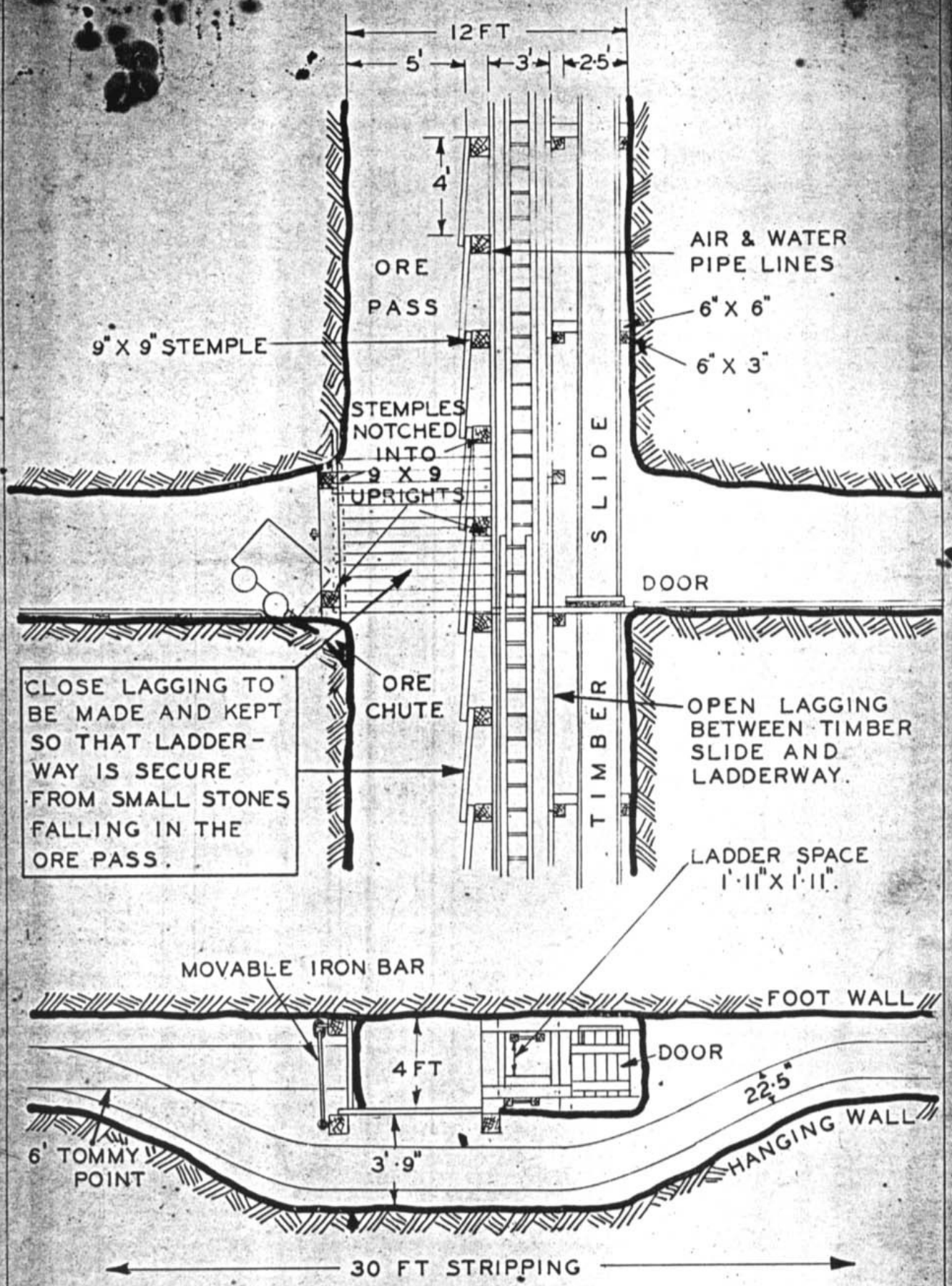


HALKYN DISTRICT UNITED  
MINES LTD.  
MINE ENGINEERS DEPARTMENT.

LAYOUT FOR BY-PASS  
IN WINZE

SCALE 5 FT TO 1 IN.	
DRWN. D.W.	23-11-37
TRCD. P.A.	28-9-37
APRD. G.L.W.	7-8-37

S 102



HALKYN DISTRICT UNITED  
MINES LTD.  
MINE ENGINEERS DEPARTMENT

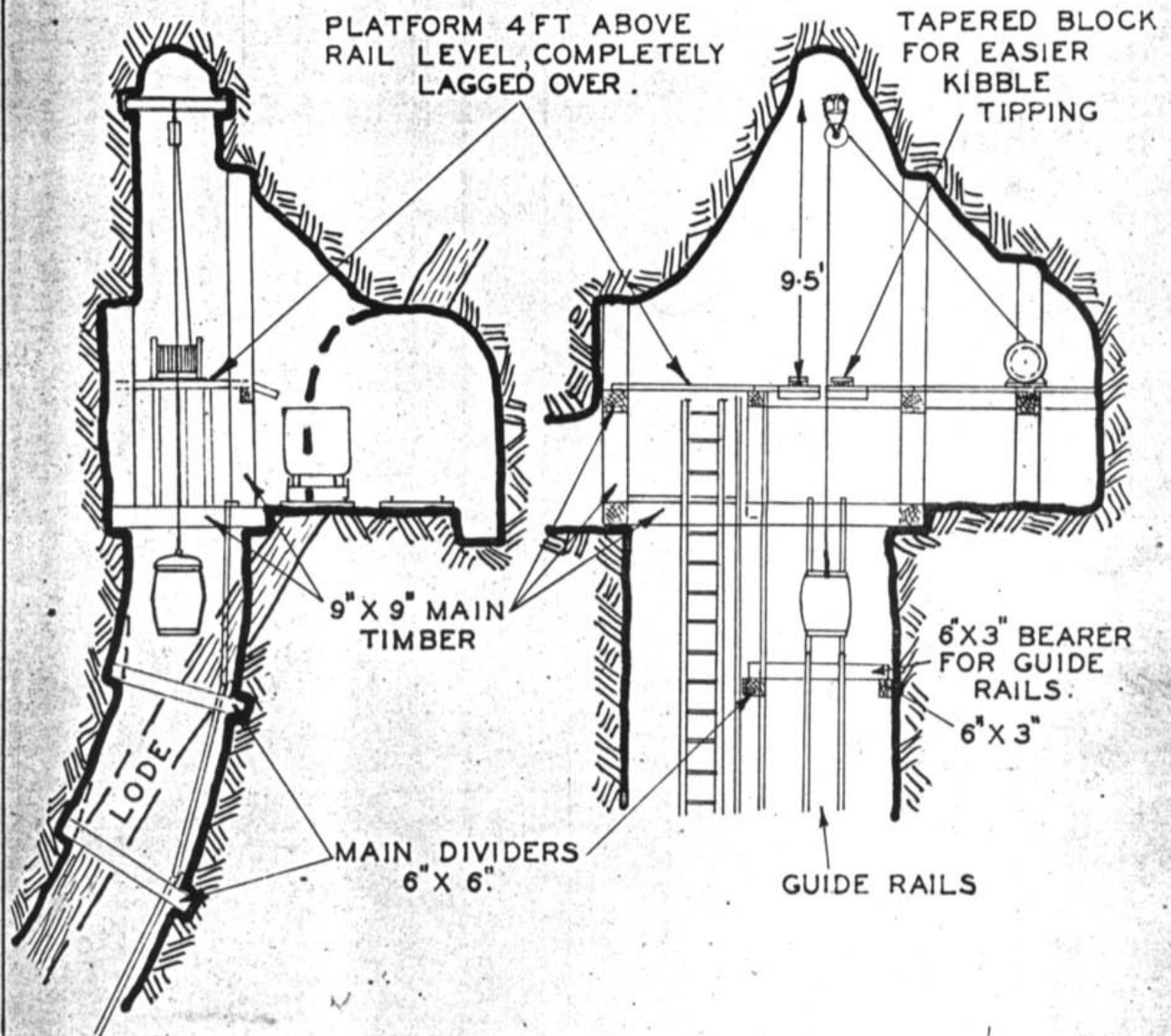
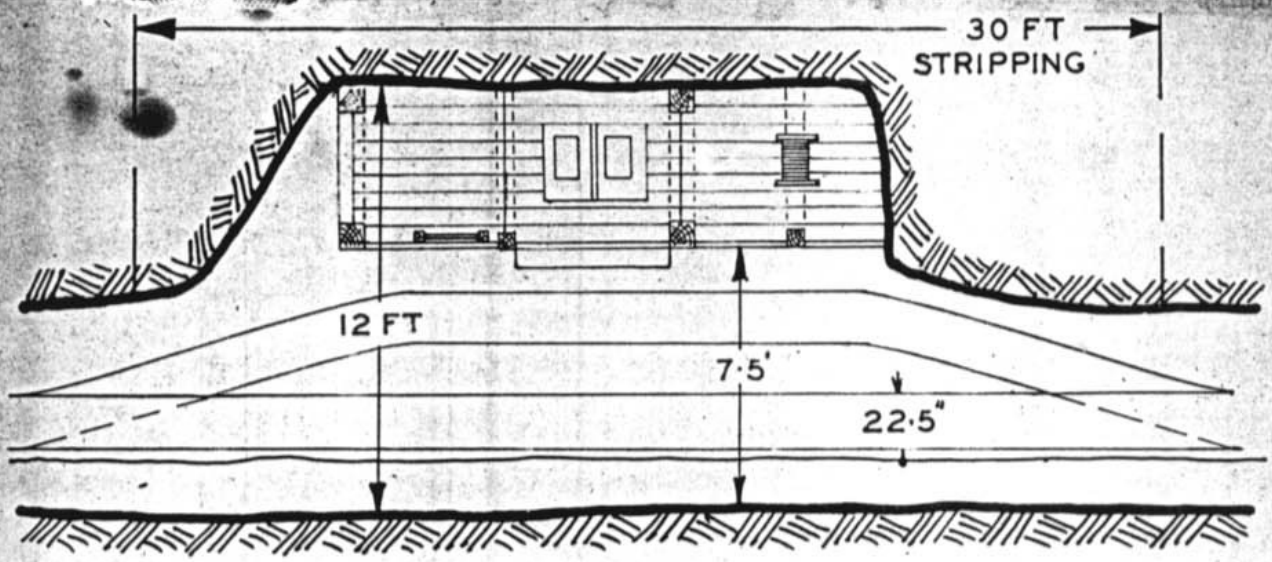
LAYOUT FOR BY-PASS  
IN RISE

SCALE, 5 FT TO 1 IN.

DRWN	H.S.	28.11.37
TRCD	H.A.	28.9.37
APRD	H.S.	30.1.37

S 101



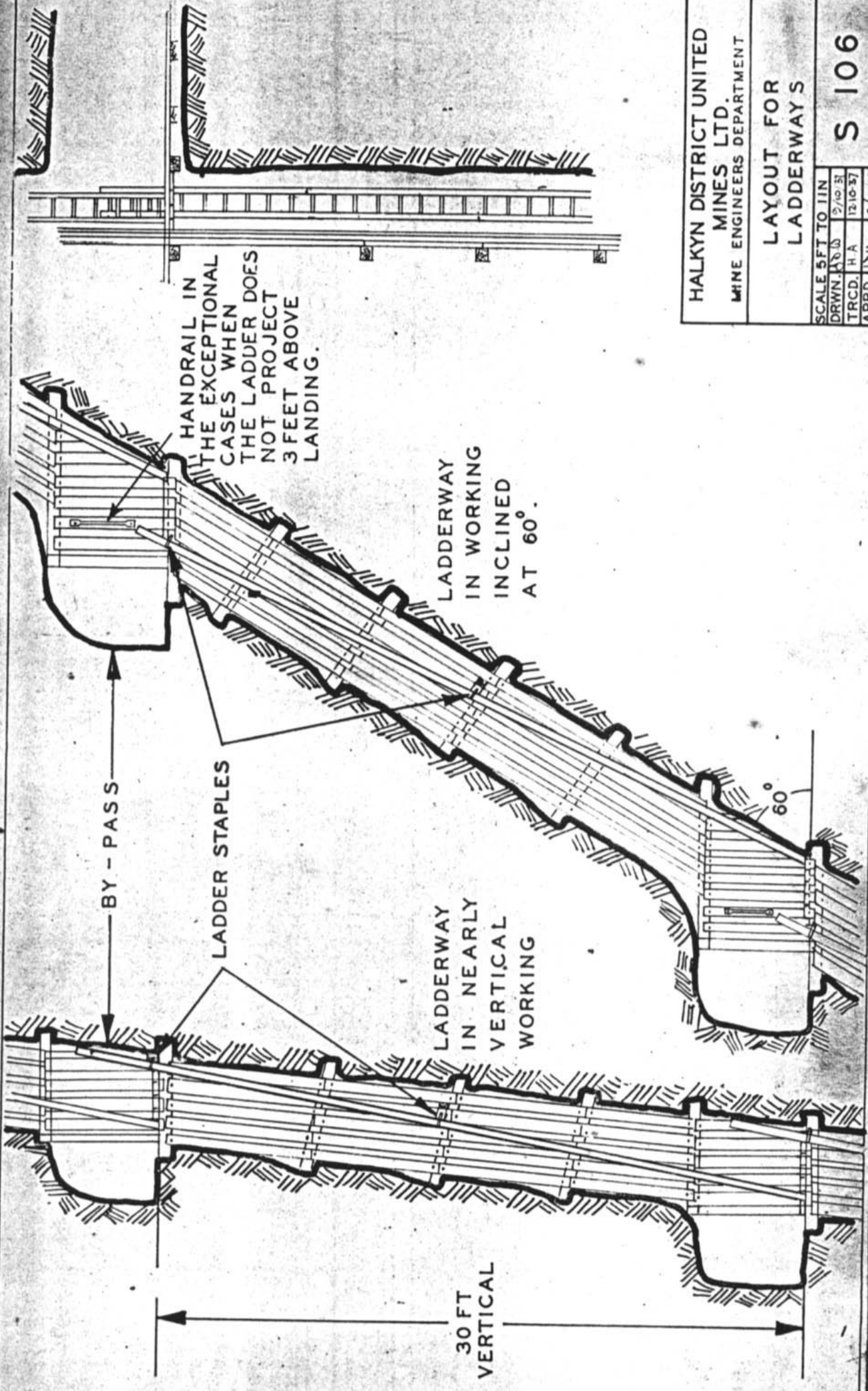


HALKYN DISTRICT UNITED  
MINES LTD.  
MINE ENGINEERS DEPARTMENT.

LAYOUT FOR TOP OF  
MAIN WINZE.

SCALE	5 FT TO 1 IN
DRWN.	A.B.D. 7/10/37
TRCD.	H.A. 7/10/37
APRD.	A.B.D. 8/10/37

S 104



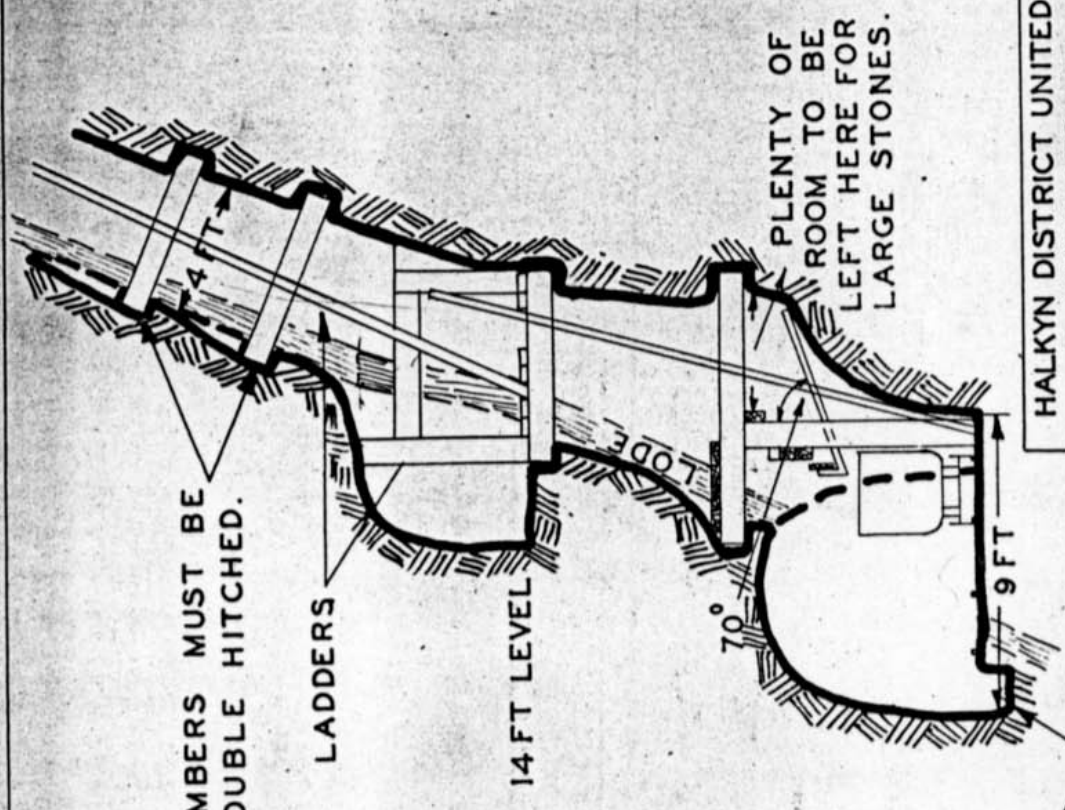
HALKYN DISTRICT UNITED  
 MINES LTD.  
 MINE ENGINEERS DEPARTMENT

**LAYOUT FOR  
 LADDERWAYS**

SCALE 5 FT TO 1 IN	
DRWN. A. G. W.	2/10/37
TRCD. H. A.	12/10/37
APRD. J. G. W.	13/6/37

S 106





THESE TIMBERS MUST BE DOUBLE HITCHED.

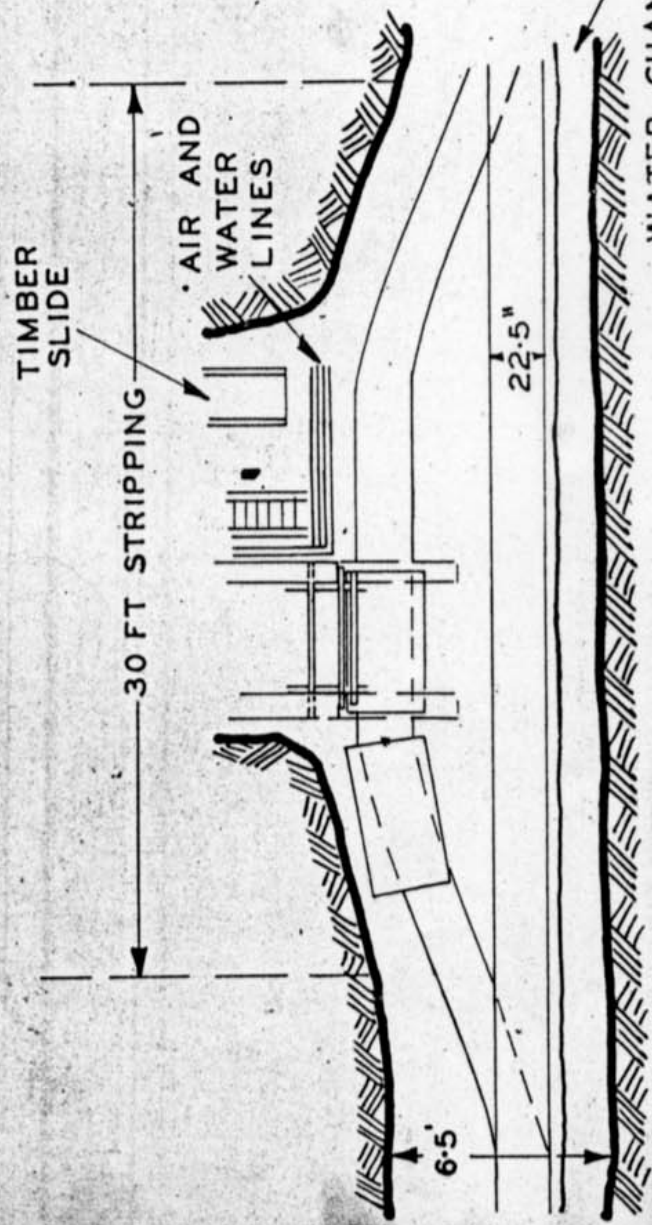
LADDERS

14 FT LEVEL

70°

9 FT

PLENTY OF ROOM TO BE LEFT HERE FOR LARGE STONES.



THESE TIMBERS MUST BE DOUBLE HITCHED.

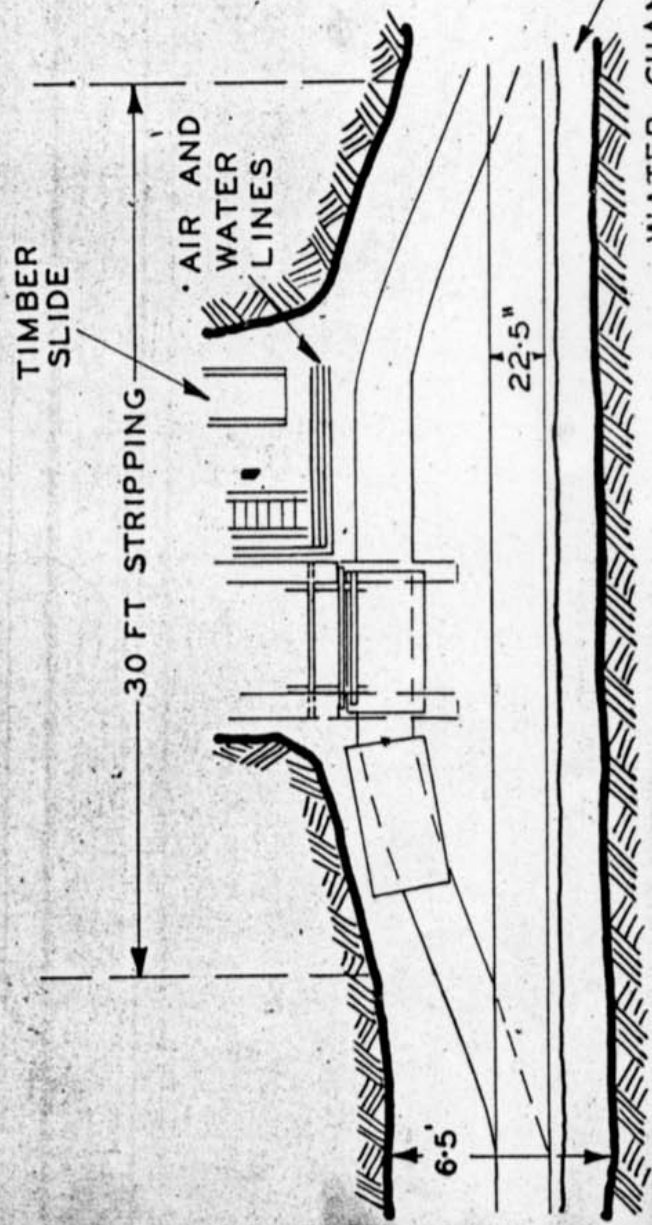
LADDERS

14 FT LEVEL

70°

9 FT

PLENTY OF ROOM TO BE LEFT HERE FOR LARGE STONES.



HALKYN DISTRICT UNITED  
MINES LTD.  
MINE ENGINEERS DEPARTMENT  
LAYOUT OF MAIN RISE  
FROM MAIN DRIFT.

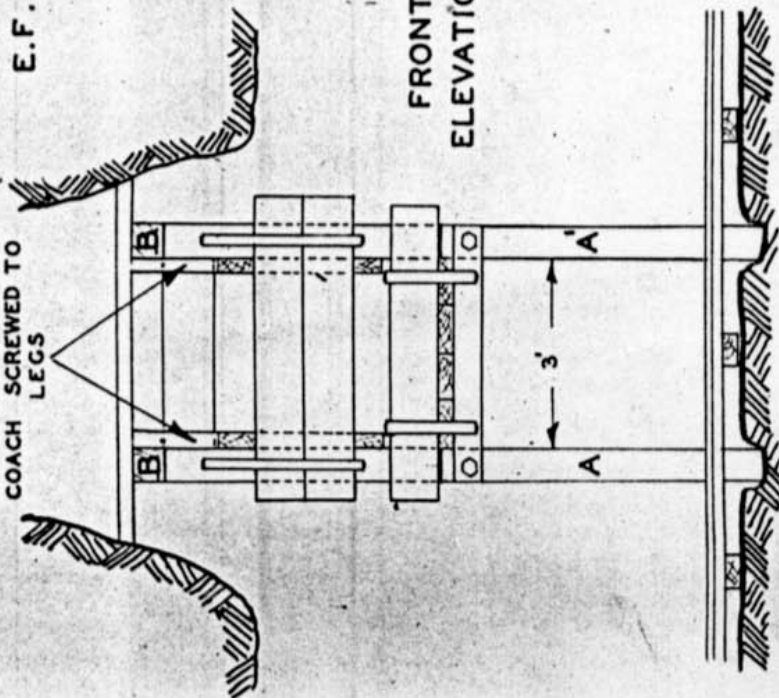
SCALE	5 FT TO 1 IN
DRWN.	J.B.S. 5/10/51
TRCD.	H.A. 7/10/51
APPR.	J.B.S. 8/10/51

**S103**

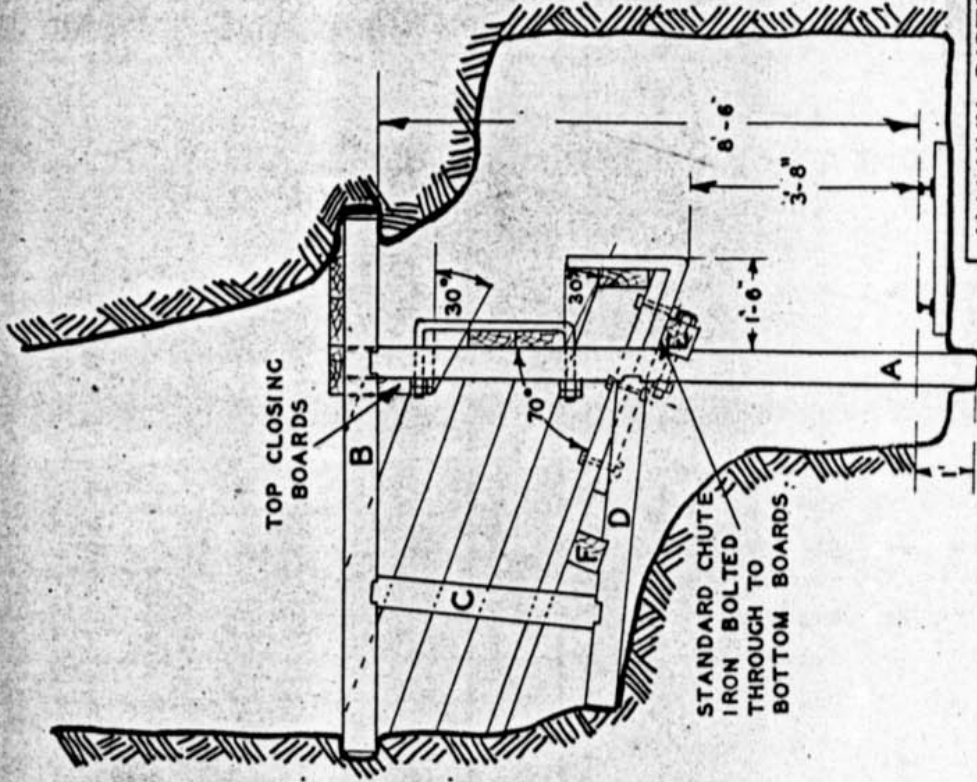
**NOTES.**

- A.A'. LEGS. 6' X 6". 1. OF EACH. STANDARD LENGTH. 9' 7".
- B.C.D. 6' X 6". 2 OF EACH. LENGTH TO SUIT GROUND.
- E.F. STANDARD LENGTH. 4'.
- ALL BOARDS 9' X 3" TIMBER.
- ALL TIMBERS NOTCHED 1" DEEP. FOR DETAILS OF IRONWORK SEE. DRG. NO. S111A.

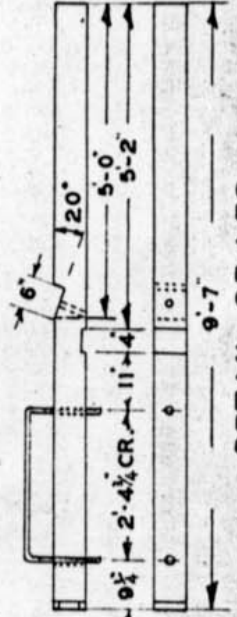
CLEATS TO HOLD TOP CLOSING BOARDS COACH SCREWED TO LEGS



**FRONT ELEVATION**



**SIDE ELEVATION**



**DETAIL OF LEG**

**HALKYN DISTRICT UNITED MINES LTD**  
MINE ENGINEERS DEPARTMENT.

**STANDARD BOX CHUTE.**

SCALE	3/8 IN TO 1 FT.
DRWN	G.A.S. 4-2-38
TRCD	H.A. 5-2-38
APRD	P.D.J. 5-2-38

**S114**